



JUNE 2019

## New Plan Sponsor Dashboard Brings Data To Your Fingertips

As previewed in the May 2019 edition of Update, this summer, Milliman will be updating and redesigning MillimanBenefits.com for both plan sponsors and participants. This month, we will focus on the new upcoming plan sponsor experience.

### The New Dashboard

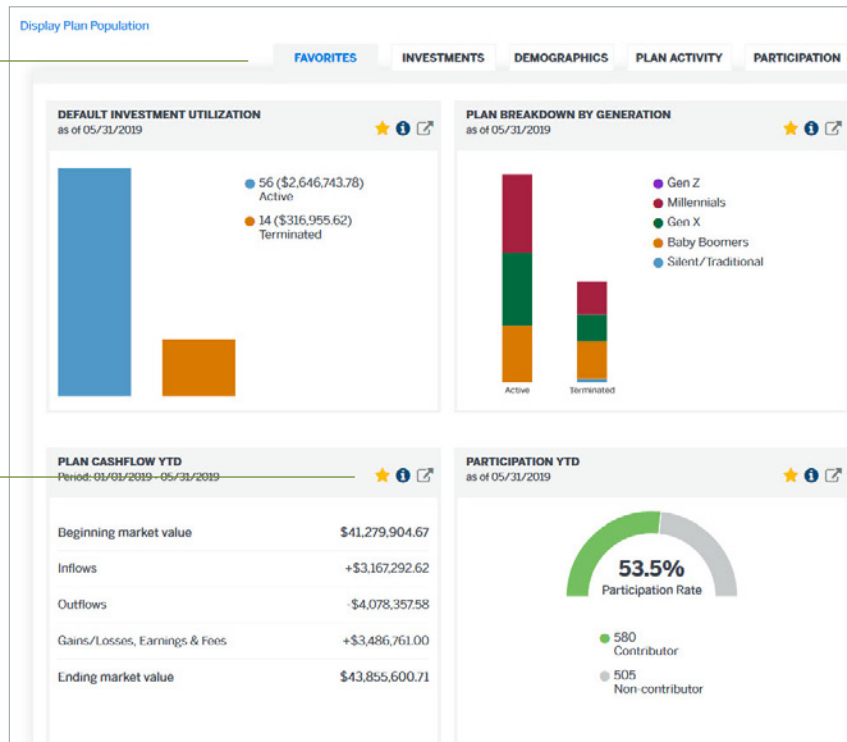
The Dashboard is customizable which allows Plan Sponsors to get an up-to-date look at plan statistics. The Dashboard provides full-color graphics and charts which makes the data quick and easy to read.

### Favorites

Select the tile you're most interested in by clicking on the star. This tile will be the first thing you see when you log in as a Plan Sponsor. You may select multiple tiles as your favorites.

### Tile Information

By clicking on the Title of the graph or chart you have the ability to view background on the data being shown.



### Data Breakout

The plan's data is broken out in several different ways to make it easy for you to find the information you're looking for.

### More In Depth

Interested in seeing the underlying detail for a certain data point? Click on the arrow to get more information

## A More In Depth Look at your Plan

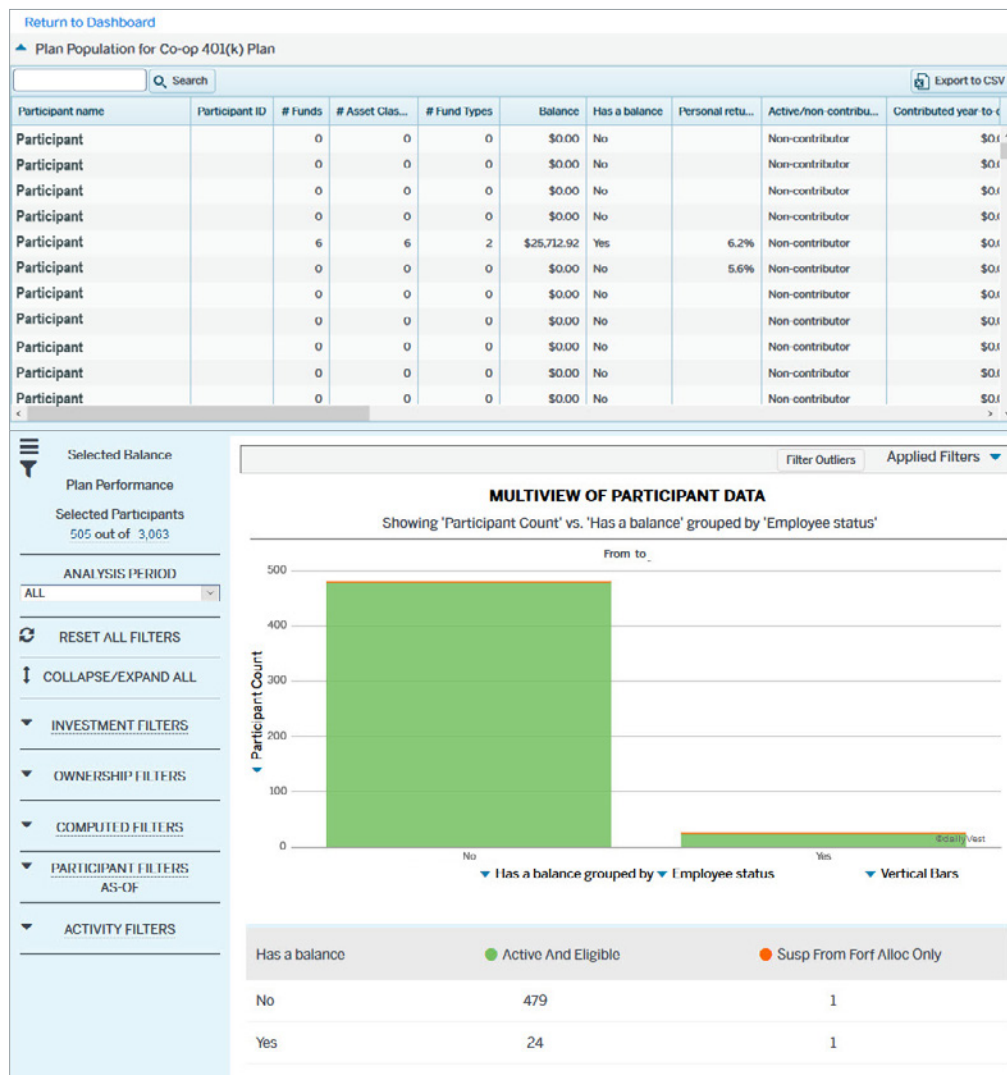
When you click on the arrow in the upper right of any tile, you'll be taken to a new screen that offers an opportunity to view the data in several different ways.

### Plan Population

Select *Plan Population* to see the names of the participants in the selected data point. For example, you can see who is contributing to the plan or not.

### Slice the Data

The new Dashboard offers several filters that allow sponsors to drill down into their data. This gives ultimate control and access to plan data.



## Milliman and the Co-op 401(k) Plan Celebrate 25 year partnership

In 1994, Milliman was hired as the new service provider for the Y.E.S. Retirement Program; which was then renamed to the Co-op 401(k) Plan. At the time, the Plan was comprised of approximately 5,000 participants across 13 states. Today, the Plan has grown to include over 25,000 participants in 24 states!

Milliman is not a law firm. Nothing in this correspondence should be construed as legal advice. Past performance is not a guarantee of future results. Data is for illustration purposes only.

### UPDATE

Employee Benefit News for the Cooperative Industry

JUNE 2019